

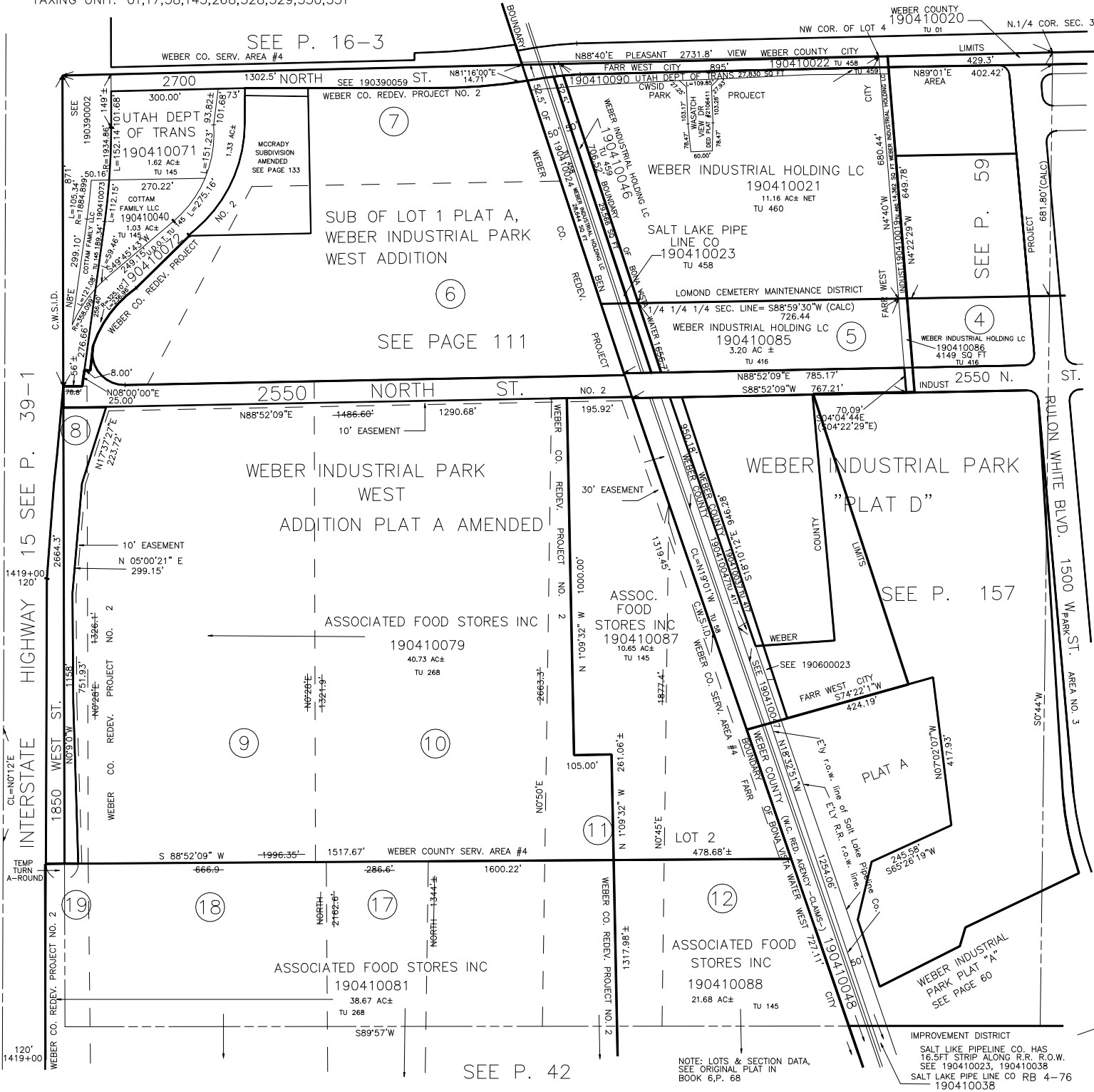
N.W. 1/4
SECTION 36, T.7N., R.2W., S.L.B.&M.

PREFIX: 19-041

IN TOWN OF PLEASANT VIEW & FARR WEST CITY

TAXING UNIT: 01,17,58,145,268,328,329,330,331

SCALE 1" = 200'



SEE P. 16-3

WEBER COUNTY 190410020
NW COR. OF LOT 4 N.1/4 COR. SEC. 36

WEBER CO. SERV. AREA #4 190410022 TU 458 190410021 TU 459

UTAH DEPT OF TRANS 190410071 1.62 AC± TU 145
COTTAM FAMILY LLC 190410040 1.03 AC± TU 145
WEBER CO. REDEV. PROJECT NO. 2

7
SUB OF LOT 1 PLAT A, WEBER INDUSTRIAL PARK WEST ADDITION
6
SEE PAGE 111

WEBER INDUSTRIAL HOLDING LC 190410021 11.16 AC± NET TU 460
SALT LAKE PIPE LINE CO 190410023 TU 458
LOMOND CEMETERY MAINTENANCE DISTRICT
WEBER INDUSTRIAL HOLDING LC 190410085 3.20 AC± TU 416
WEBER INDUSTRIAL HOLDING LC 190410086 4.149 AC± TU 416
SEE P. 59
SEE P. 157

2550 NORTH ST. NO. 2 N88°52'09"E 1486.66' 1290.68' 195.92' N88°52'09"E 785.17' S88°52'09"W 767.21'

WEBER INDUSTRIAL PARK WEST ADDITION PLAT A AMENDED

WEBER INDUSTRIAL PARK "PLAT D" LIMITS

ASSOCIATED FOOD STORES INC 190410079 40.73 AC± TU 268

ASSOC. FOOD STORES INC 190410087 10.65 AC± TU 145

PLAT A N07°02'07"W 417.93'

9
10
11
18
17
12
ASSOCIATED FOOD STORES INC 190410081 38.67 AC± TU 268
ASSOCIATED FOOD STORES INC 190410088 21.68 AC± TU 145

SEE P. 42

NOTE: LOTS & SECTION DATA, SEE ORIGINAL PLAT IN BOOK 6, P. 68
IMPROVEMENT DISTRICT
SALT LAKE PIPELINE CO. HAS 16.5FT STRIP ALONG R.R. R.O.W. SEE 190410023, 190410038
SALT LAKE PIPE LINE CO RB 4-76 190410038